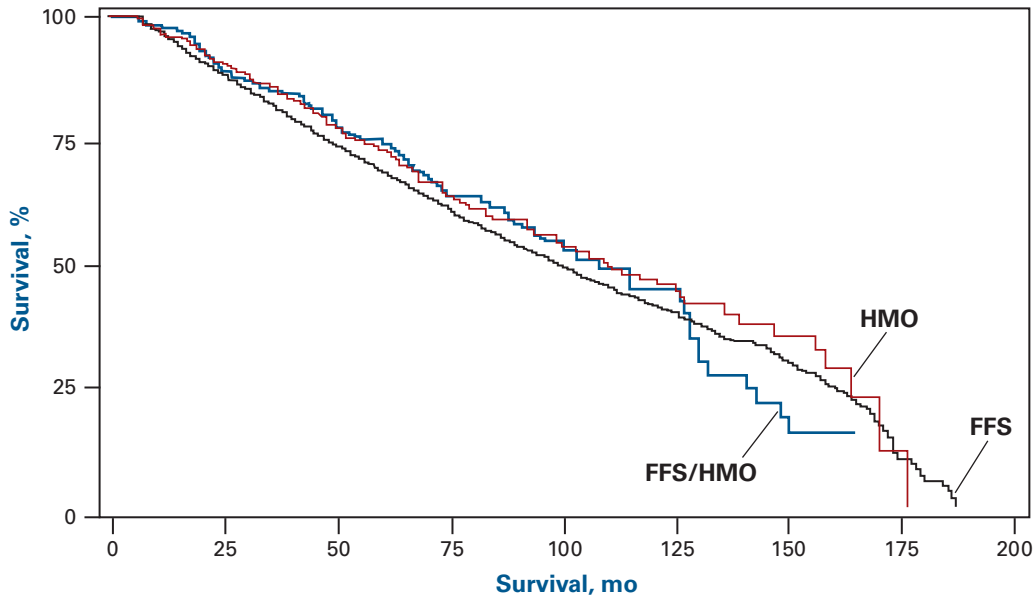


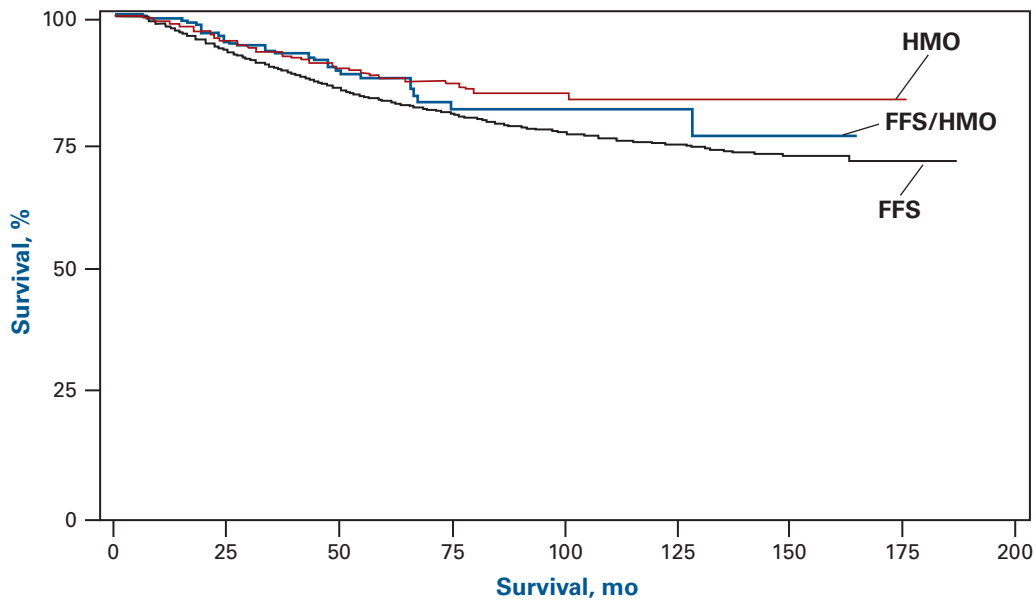
Medicare Beneficiaries With Disabilities

■ **eFigure 1.** Survival (All Cause) by Insurance Type for Women With Breast Cancer^a



^aDuring 12 months before diagnosis and during 6 months after diagnosis (4118 for fee-for-service [FFS], 542 for health maintenance organization [HMO], and 217 for mixed FFS/HMO). Women with in situ cancers excluded. $P = .16$ for differences in survival by log-rank test.

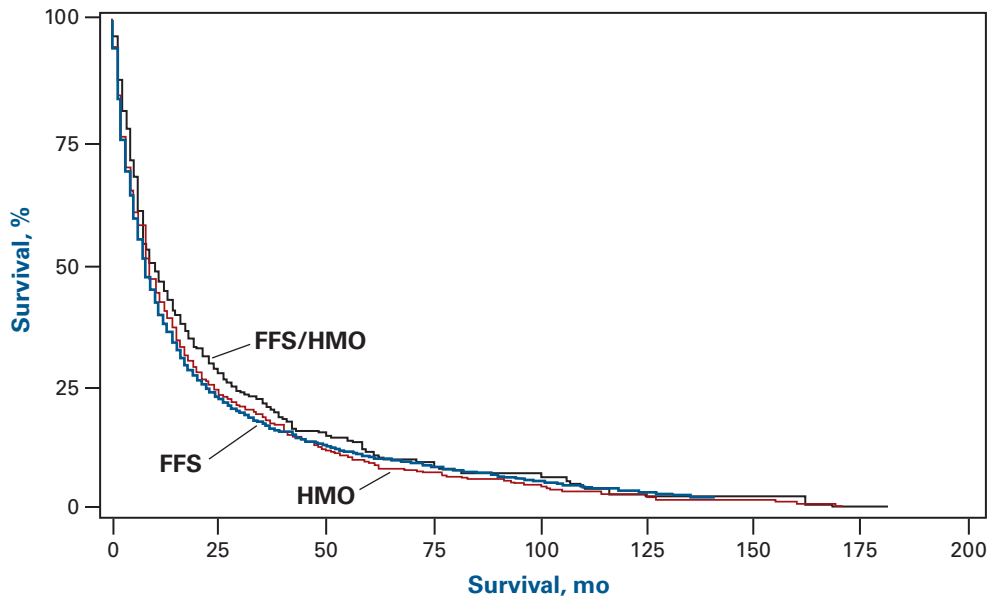
■ **eFigure 2.** Breast Cancer Survival by Insurance Type^a



^aDuring 12 months before diagnosis and during 6 months after diagnosis (4118 for fee-for-service [FFS], 542 for health maintenance organization [HMO], and 217 for mixed FFS/HMO). Women with in situ cancers excluded. $P = .005$ for differences in survival by log-rank test.

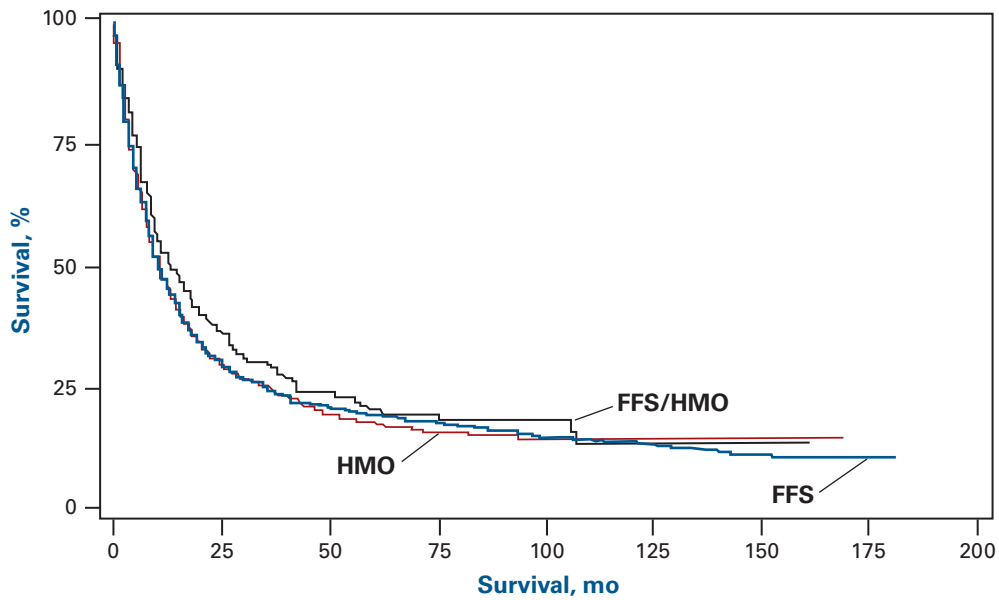
■ CLINICAL ■

■ **eFigure 3.** Survival (All Cause) by Insurance Type for Persons With Lung Cancer^a



^aDuring 12 months before diagnosis and during 6 months after diagnosis (7568 for fee-for-service [FFS], 916 for health maintenance organization [HMO], and 350 for mixed FFS/HMO). Persons with in situ cancers excluded. $P = .08$ for differences in survival by log-rank test.

■ **eFigure 4.** Lung Cancer Survival by Insurance Type^a



^aDuring 12 months before diagnosis and during 6 months after diagnosis (7568 for fee-for-service [FFS], 916 for health maintenance organization [HMO], and 350 for mixed FFS/HMO). Persons with in situ cancers excluded. $P = .09$ for differences in survival by log-rank test.